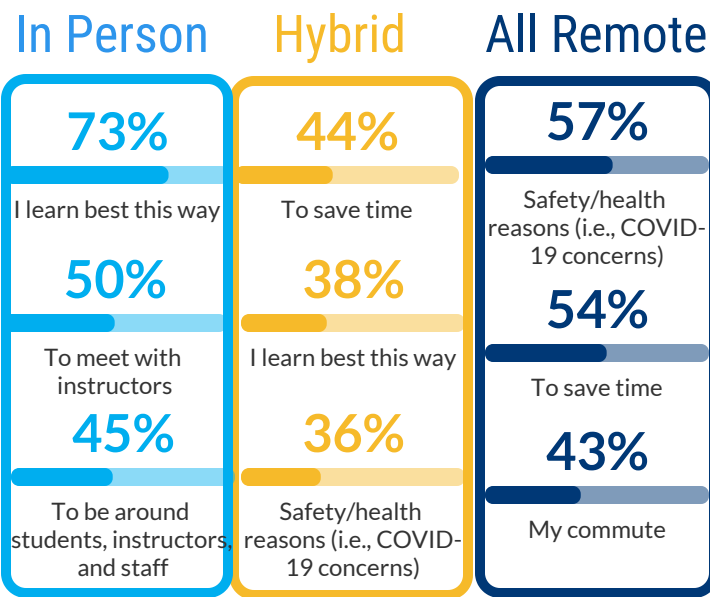


Education Engagement Index: Student Data Highlights

NOCCCD administered an online survey in spring 2023 to all students. 5,168 students responded to the survey and provided feedback on their experiences learning during the pandemic and their preferences for the future. Key data trends are presented below.

Why did you choose your current schedule?



In Person: 11% of total respondents
Hybrid: 26% of total respondents
All Remote: 52% of total respondents

What do you like most about each modality?

Learning IN PERSON

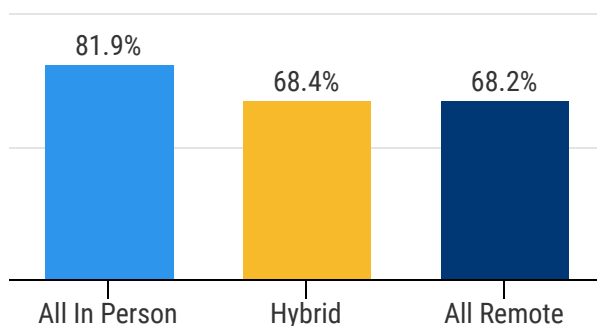
- 67%** Working in person with instructors
- 66%** Socializing with others
- 55%** Working in person with classmates
- 50%** Having a daily schedule/routine

Learning from HOME

- 84%** The flexible schedule/routine
- 67%** Not needing to commute
- 60%** Options for when and how you learn
- 56%** Having control over my personal space

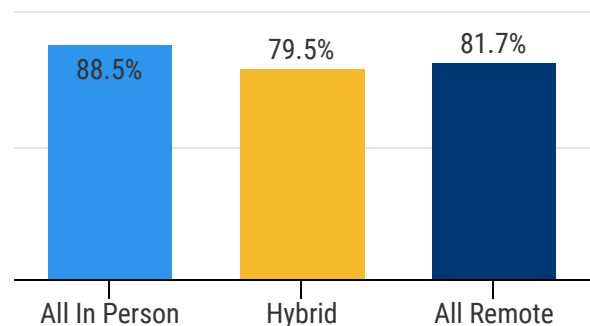
Modality Impact on Belonging / Motivation

Feeling Sense of Belonging at School by Modality



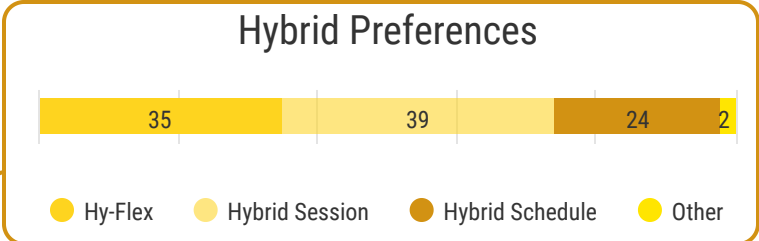
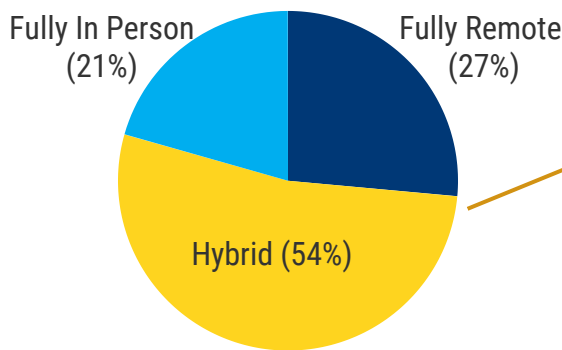
Percentages represent Agree or Strongly Agree to the statement, "I feel a sense of belonging at school" for students taking classes in the reported modality.

Feeling Motivated to Learn by Modality



Percentages represent Agree or Strongly Agree to the statement, "I feel motivated to learn" for students taking classes in the reported modality.

What Modality Would You Choose for the Future?



Hy-Flex: Class meetings with all activities both virtual and in person with students choosing their preferred format
Hybrid Session: Class meetings with some activities in person and other activities virtual
Hybrid Schedule: Class scheduled to meet in person or virtual based on the day of the week or portion of the semester (example: Mondays in person and Tuesdays online; first half of the semester online and the second half in person)

Future Learning Activities: Top 3 by Current Modality

In Person

1. In-person live lectures
2. Live in-class discussion
3. Textbooks, articles, and other reading materials

Hybrid

1. In-person live lectures
2. Pre-recorded lectures
3. Live in-class discussion

Remote

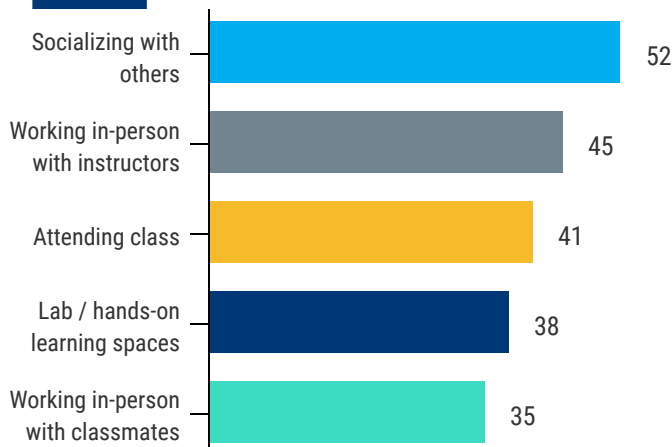
1. Pre-recorded lectures
2. Virtual/remote live lectures (e.g., Zoom)
3. Textbooks, articles, and other reading materials

Note: Lists represent the three highest learning activities respondents marked in response to the question, "In the future, which of the following learning activities do you think would be most effective for you?"

Drivers for Coming to Campus



Social/Academic



Note: Chart represents the most important reasons respondents indicated they would come to campus in the future.



Student Services

Prefer to Access In-Person

1. Fitness Center & Recreational Sports

Prefer to Access Both In-person and Virtually

1. Technical & Computer Support
2. Counseling services
3. Transfer / Career Center
4. Admissions & Records
5. Multicultural & Diversity programs and centers
6. Specialized Support Programs (e.g., DSS, EOPS)
7. Academic support services/Student Success Centers
8. Financial Aid
9. Student Life
10. Health Centers & Wellness Services
11. Libraries / Reference Services

Note: List represents the modality with the highest proportion of student preference for that service (In-Person, Virtual, Both In-person and Virtual)

Technical Notes

Student responses were large enough to generalize to NOCCCD's population for the district as a whole at a 95% confidence interval. However, this survey was conducted online and therefore may suffer from nonresponse bias from students who are not familiar with or who do not have consistent access to technology or the Internet. These survey results represent one data point to help design a campus environment that reflects what students and employees want and need to succeed.